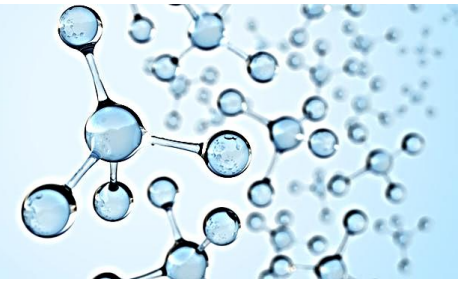


ETCH | TECH



About us

Etch Tech is a family owned and run chemical etching company that specialises in large panels and architectural projects. Since 2009 we have been providing a high level of finish, quality and lead times that push the boundaries of what's possible.

We pride ourselves on working with our clients to help bring their ideas to life in the best format possible. Our team at Etch Tech has a combined experience of over 100 years, this allows us to take on, and complete, projects other companies may describe as 'impossible'.

As a more focused and streamlined organisation, Etch Tech can offer you unparalleled personal attention on your project. We can work with you on aspects such as; Design Viability; Alterations; Choice of Metal; Sheet or Panel Size; Finish; Product Care, and much more

How we work

At Etch Tech we work with all kinds of people and companies, from architectural designers to shop fitters, major brands and engineers in everything from automotive to aerospace. In turn we have been involved with many interesting projects.

7 Air Street – London

For this award-winning project, the developers required some **colossal gilded-brass panels etched and infilled**, to be used in the entrance of a development in central London.

Our customer had reached out to several companies, no one would take this project on due its size and the complications that come with components of this magnitude. Due to our expertise in this area we were confident we could complete the job and complete it to a very high standard.

We worked alongside our customer to pinpoint exactly what level of finish they were looking for and explored the best options to achieve their goal. It was decided that etching would be the most effective way to attain the required level of detail and finish they wanted.

We are very happy that even on a job of this size we are still able to achieve the high level of detail and finish required by our customer.



Decorative cladding, 21-23 Farm Street – London

Etch Tech supplied the complete, formed and powder coated, external aluminium cladding for this exclusive residence.

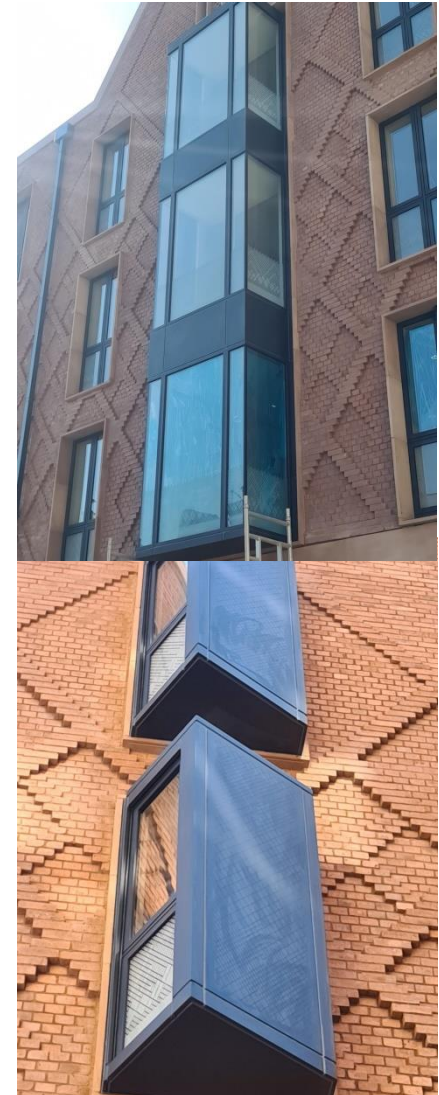
This included a significant number of large etched panels as components of the cladding.

The etched detail on these allows the cladding to carry the same decorative features as the brickwork, adding extra detail to an already striking piece of architecture.

Each component was powder coated to the RAL specified by the developer, we also offer spray painting and anodising (aluminium) in any colour specification you provide.

Whether you require cladding with etched design features, or plain, Etch Tech has experience in delivering this, on time and within budget.

The entire project took just weeks, and was well received by the client with the construction due to be completed later in 2021.



Newport Sandringham – Chinatown, London

We were approached by a customer, who was searching for a company who could produce some **decorative brass panels** for their clients shop front.

Our expertise allowed us to take the project on, and we were confident we could achieve what the customer had dreamed up.

We worked closely with their team to see what type of finish they required.



After some discussion we came to the decision that the best way to achieve the required quality with their design was to etch the graphic into the surface, and finish with a black infill. We enjoyed every moment of this job from start to finish, in particular when the customer expressed their delight with the finished panels.

Great Scotland Yard Hotel – London

A lift installation company contacted us with a rather difficult enquiry, they had 14 pre-assembled **lift doors** that needed a design laid into the surface. They were to be fitted into a brand new 5 star hotel in London.

The customer had played around with ideas of what methods they could use. The design on each set of doors had to match up perfectly and we had no room for error. As the doors arrived 'preformed' and not flat this added another layer of complexity.

We were extremely happy with the outcome of the doors, as was the customer. The etching went without a hitch, it was bright, immaculately clean and the surface etch was in perfect contrast with the rest of the door.



It was great to hear that the design was positioned spot on and had lined up to the tightest of tolerances. We found great satisfaction in breathing life into our customer's hopes and dreams, quite a striking end result, no?

What we promise

At Etch Tech customer satisfaction is of utmost importance to us and making our customers dreams come true is always an outcome we strive to meet.

We work with a number of Shop Fitters, Prop Makers, Display Designers, to create high-spec etched metal displays for end users such as (but not limited to) Louis Vuitton, Game of Thrones, Harrods, the Saudi Royal Family and Nobu Hotel Portland Square (upcoming).

We can supply, amongst other things, larger etched panels than you would find throughout Europe, with a highly decorative level of finish that can include options such as plating, anodizing, or inlaid paint.

My team prides itself on a consultative approach, meaning that we will work with you to bring your ideas/designs to life in the best format possible.

These are just a few of the many projects we have worked on, we are excited about what the future holds and are keen to be involved in many more projects like these.

So get in touch and let's see what we can create!

- **Etch Tech**